



Photography: Wiseman Images, Inc. Boston, MA



**Architect**  
**JK**  
 KENAN-KENNY ARCHITECTS, LTD.  
 189 Main Street, Suite 2A  
 Falmouth, MA 02540

**Structural and Civil Engineers**  
 Lin Associates, Inc. (MBE)  
 2001 Beacon Street, Suite 310  
 Brighton, MA 02135-7770

**Mechanical and Electrical Engineers**  
 Griffiths & Vary, Inc.  
 12 Kendrick Road  
 Wareham, MA 02571

**Historic Preservation Consultant**  
 Sara B. Chase (WBE)  
 4 Grassland Street  
 Lexington, MA 02421

**Industrial Hygienists**  
 Smith & Wessel Associates, Inc.  
 8 Church Street  
 Merrimac, MA 01860

**Contractor**  
 J&W Company, Inc.  
 18 Allen Street  
 Leominster, MA 01453



The Copeland Building (Rededicated as Blinn Hall) is the oldest building on the Massachusetts Maritime Academy campus. It was constructed in 1932 as a passenger terminal and a freight-shipping center on the new Cape Cod Canal.

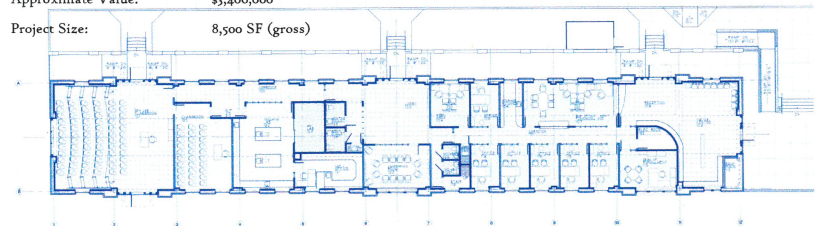
Renovations to the Copeland Building included:

- Foundation stabilization
- Building Envelope Repairs
- Interior renovations for classrooms, offices and a visitors' center

Substantial Completion Date: September 12, 2002

Approximate Value: \$3,400,000

Project Size: 8,500 SF (gross)



Division of Capital Asset Management  
 One Ashburton Place, 15th Floor  
 Boston, MA 02108  
 Charles Willse, Project Manager  
 Joseph Marascio, Project Engineer  
 Neil Johnson, Director

Massachusetts Maritime Academy  
 101 Academy Drive  
 Buzzards Bay, MA 02532  
 Captain Rick Gurnon, Dean of Students  
 Jim Barrett, Director of Facilities  
 Paul O'Keefe, Chief Engineer  
 George Benway, Utilities

## COPELAND BUILDING RENOVATION

Massachusetts Maritime Academy, Buzzards Bay, Massachusetts